

Metodika dizajnu

Tímový projekt

Tím č. 21

Vedúci: Ing. Ivan Srba, PhD.

tím21.2018.fiit@gmail.com

Autor metodiky: Lenka Pejchalová

1 Dedikácia metodiky

Grafické používateľské rozhranie zohráva veľmi dôležitú úlohu. Získavanie informácií z kamery je v našom prípade potrebné vhodne a najmä prehľadne vizualizovať. Keďže s rozhraním môžu pracovať aj menej skúsenejší používatelia, je potrebné, aby bolo rozloženie prvkov na stránke prehľadné a intuitívne. Za ďalšie rozhodujúce faktory pri dizajne grafických používateľských rozhraní považujeme prehľadnosť, použiteľnosť, efektívnosť a príjemný vzhľad vytvárajúcej aplikácie.

Pri vývoji webovej aplikácie v našom projekte pracovalo naraz viacero vývojárov, čo spôsobilo nejednotnosť dizajnu. Tento fakt sa stal podnetom na vytvorenie metodiky dizajnu a tiež aj samotného návrhu dizajnu, ktorý bude kľúčovým prvkom pri vývoji. Vytvoril sa teda dizajn, ktorý každý z členov pri programovaní musel dodržať.

1.1 AdminLTE

Dizajn sa odvíja od voľne dostupnej šablóny AdminLTE <https://adminlte.io>

Táto šablóna ponúka responzívne komponenty, viacero farebných motívov, pluginov a tiež aj širokú podporu prehliadačov.

Vytvorený dizajn prikladáme ako prílohu.

2 Povinnosti vyplývajúce z metodiky dizajnu

2.1 Povinnosti vývojára

Dbáť na vyvíjané rozhranie a dodržiavať vytvorený návrh dizajnu. V prípade problémov, alebo tvorby prvku rozhrania, ktoré nie je v návrhu spracované, kontaktovať tvorca dizajnu a spoločne nájsť najlepšie riešenie. Podobne postupovať aj v prípade identifikácie akéhokoľvek problému spojeného s UI.

2.2 Povinnosti vývojára pri code review

Code review vykonávať dôsledne, to znamená, otestovať základnú funkčnosť stránky. Navyše, očakáva sa, že pull request obsahuje opísané vykonané zmeny. V ideálnom prípade pripojiť aj vizuálnu ukážku zmeny, na ktorú sa pri testovaní a následnom akceptovaní zamerať.

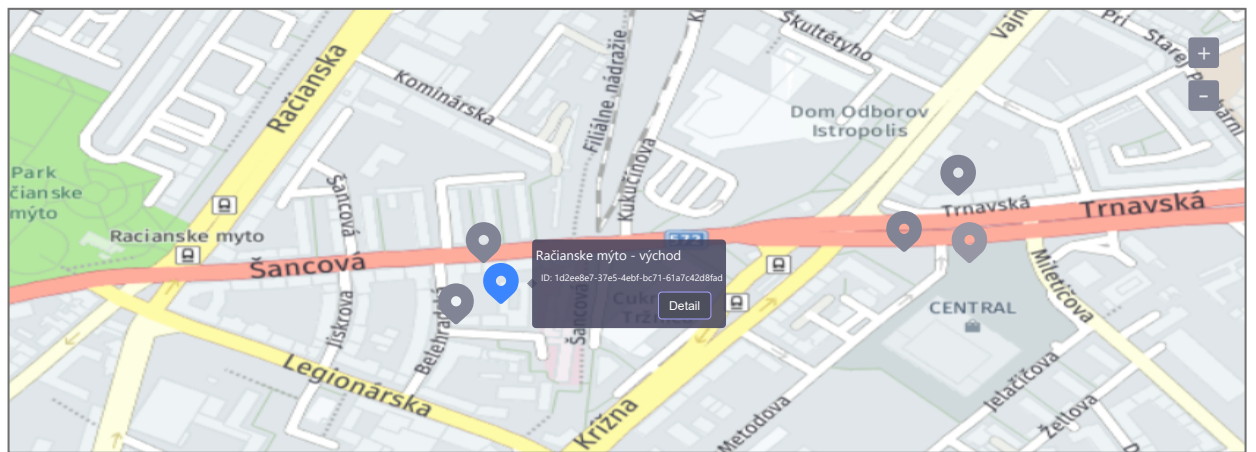
2.3 Návrh používateľského rozhrania

MAIN NAVIGATION

CONFIGURATION

Dashboard welcome

List od monitored areas in: Bratislava



MAIN NAVIGATION

Dashboard

Monitored Areas

CONFIGURATION

Admin Configuration

Monitored areas

choose area & set date and time & get results

Dashboard > Monitored Areas

Monitored area filter

Choose area:

Obtain real-time data:

Date and time filter:

- Table of passed vehicles
- Chart of passed vehicles
- Map of passed vehicles
- Real-view of passed vehicles
- Livestream

Table of passed vehicles

Car transits **246**

Bus transits **178**

Tram transits **140**

LOCATION	NUMBER OF PASSED VEHICLES
adobe.com	3746
adobe.com	8126
adobe.com	8836
adobe.com	1173
adobe.com	2739

Previous Page 1 of 1 5 rows 10 rows 20 rows 30 rows Next

MAIN NAVIGATION

Dashboard

Monitored Areas

CONFIGURATION

Admin Configuration

Monitored areas

choose area & set date and time & get results

Dashboard > Monitored Areas

Monitored area filter

Choose area:

Račianske Mýto - Sever

Obtain real-time data:



Date and time filter:

2019-02-17 00:02:36

2019-02-17 00:02:36

Filter

Table of passed vehicles

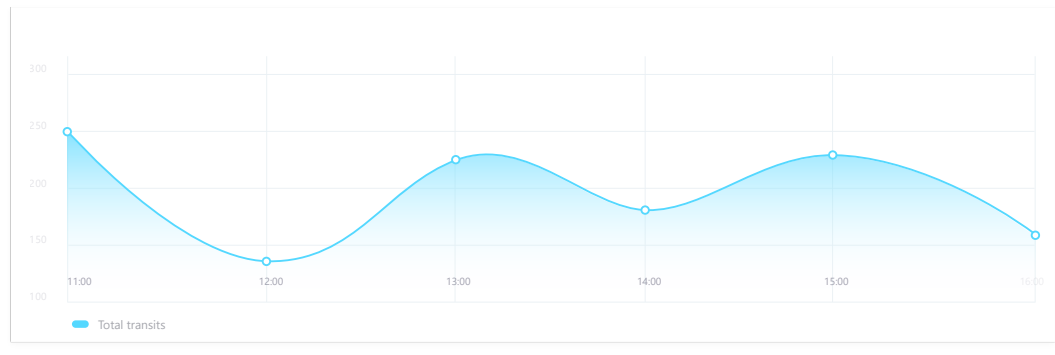
Chart of passed vehicles

Map of passed vehicles

Real-view of passed vehicles

Livestream

Chart of passed vehicles



MAIN NAVIGATION

Dashboard

Monitored Areas

CONFIGURATION

Admin Configuration

Monitored areas

choose area & set date and time & get results

Dashboard > Monitored Areas

Monitored area filter

Choose area:

Račianske Myto - Sever

Obtain real-time data:



Date and time filter:

2019-02-17 00:02:36

2019-02-17 00:02:36

Filter

Table of passed vehicles

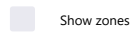
Chart of passed vehicles

Map of passed vehicles

Real-view of passed vehicles

Livestream

Map of passed vehicles



Show zones



Show transits



Show trajectory



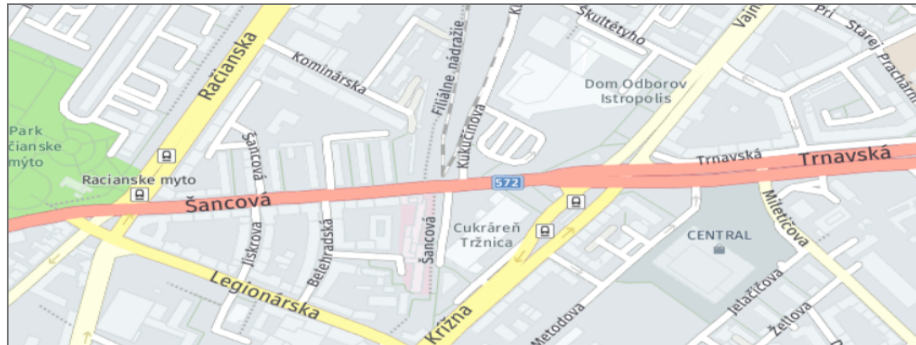
Show transition arrows



Show heat maps of stops



Show heat maps of speed



MAIN NAVIGATION

Dashboard

Monitored Areas

CONFIGURATION

Admin Configuration

Monitored areas

choose area & set date and time & get results

Dashboard > Monitored Areas

Monitored area filter

Choose area:

Obtain real-time data:

Date and time filter:

Table of passed vehicles

Chart of passed vehicles

Map of passed vehicles



Real-view of passed vehicles


Livestream

Real-view of passed vehicles





- Show zones
- Show transits
- Show trajectory
- Show heat maps of stops
- Show heat maps of speed
- Show transition arrows


trafficwatch  

 Traffic Watch
About us

MAIN NAVIGATION

-  Dashboard
-  Monitored Areas

CONFIGURATION

-  Admin Configuration

Monitored areas choose area & set date and time & get results

Dashboard > Monitored Areas

Monitored area filter

Choose area: Obtain real-time data:

Date and time filter:

Table of passed vehicles | Chart of passed vehicles | Map of passed vehicles | Real-view of passed vehicles | **Livestream**

Livestream

MAIN NAVIGATION

Dashboard

Monitored Areas

CONFIGURATION

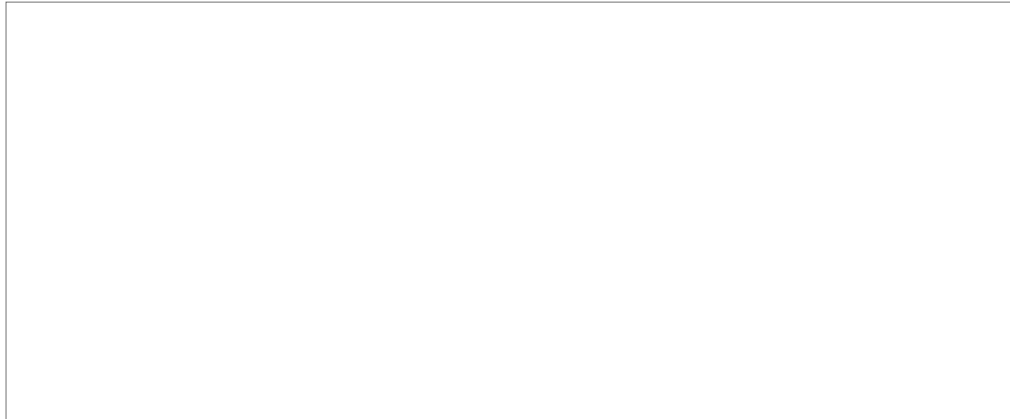
Admin Configuration

Watch livestream from Monitored Area livestream

Dashboard > Admin Configuration > Livestream

Livestream

Monitored Area: ID



Stop

MAIN NAVIGATION

Dashboard

Monitored Areas

CONFIGURATION

Admin Configuration

Admin Configuration

edit, create, set up Monitored Areas

Dashboard > Admin Configuration

Table of passed vehicles

Map of passed vehicles

Add new area

Table of passed vehicles

MONITORED AREA								
ID	Device ID	Name	Latitude	Longitude	Edit	Annotate	Livestream	Parameters
8126	8126	Lorem	8126	8126				
8126	8126	Ipsum	8126	8126				
8126	8126	Dolor	8126	8126				
8126	8126	Amet	8126	8126				
8126	8126	Si	8126	8126				

Previous

Page 1 of 1

5 rows

Next

- 10 rows
- 20 rows
- 30 rows

MAIN NAVIGATION

Dashboard

Monitored Areas

CONFIGURATION

Admin Configuration

Admin Configuration

edit, create, set up Monitored Areas

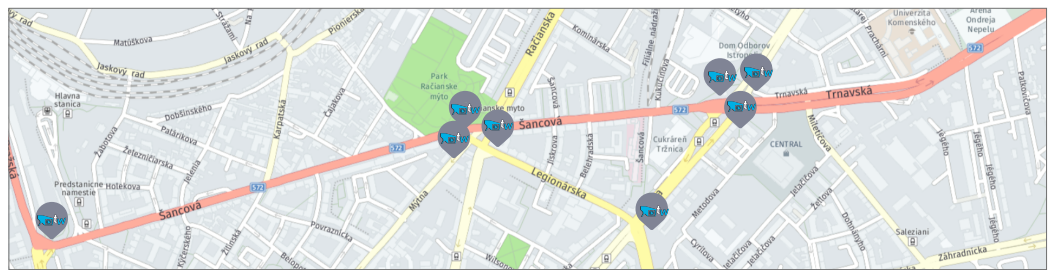
Dashboard > Admin Configuration

Table of passed vehicles

Map of passed vehicles

Add new area

Map of passed vehicles



MAIN NAVIGATION

Dashboard

Monitored Areas

CONFIGURATION

Admin Configuration

Edit Monitored Area

edit basic info about Monitored Area

Dashboard > Admin Configuration > Edit Monitored Area

Edit Monitored Area

Device

Monitored Area Name

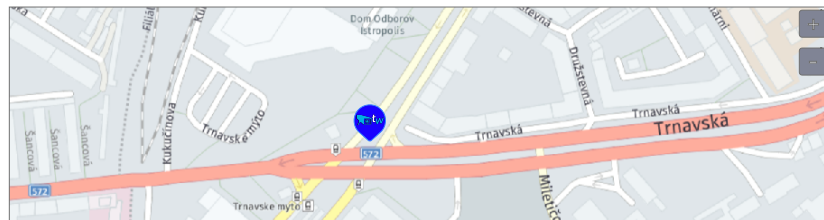
Račianske Mýto - Sever

Device

Coordinates

41.9421539

41.2054312



Delete monitored Area

Cancel

Update

trafficwatch
☰
⚙️

Traffic Watch
About us


MAIN NAVIGATION

- Dashboard
- Monitored Areas
- CONFIGURATION
- Admin Configuration

Annotation of area lorem ipsum dolor amet

Dashboard > Admin Configuration > Annotate Monitored Area

Trnavske mýto - sever



Show map
Show screenshot

Table of passed vehicles Add new zone +

ID	Device ID	MONITORED AREA			PARAMETERS				Edit
		Name	Latitude	Longitude	ID	Background Subtraction History	Detector Min	Contour Width	
8126	8126	Lorem	8126	8126	3746	1173	8126	8126	⚙️
8126	8126	Ipsam	8126	8126	8126	1173	8126	8126	⚙️
8126	8126	Dolor	8126	8126	8836	1173	8126	8126	⚙️
8126	8126	Amet	8126	8126	1173	1173	8126	8126	⚙️
8126	8126	Si	8126	8126	2739	1173	8126	8126	⚙️

Previous
Page 1 of 1
5 rows
Next

Cancel
Update

trafficwatch
☰
⚙️

Traffic Watch
About us

MAIN NAVIGATION

- Dashboard
- Monitored Areas

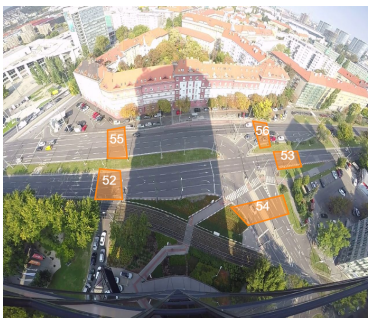
CONFIGURATION

- Admin Configuration

Annotation of area lorem ipsum dolor amet

Dashboard > Admin Configuration > Annotate Monitored Area

Trnavske mýto - sever



Show map
Show screenshot

Table of passed vehicles Add new zone +

ID	Device ID	MONITORED AREA			PARAMETERS				Edit
		Name	Latitude	Longitude	ID	Background Subtraction History	Detector Min Contour Width	...	
8126	8126	Lorem	8126	8126	3746	1173	8126		⚙️
8126	8126	Ipsum	8126	8126	8126	1173	8126		⚙️
8126	8126	Dolor	8126	8126	8836	1173	8126		⚙️
8126	8126	Amet	8126	8126	1173	1173	8126		⚙️
8126	8126	Si	8126	8126	2739	1173	8126		⚙️

Previous
Page 1 of 1
5 rows
Next

Cancel
Update

MAIN NAVIGATION

Dashboard

Monitored Areas

CONFIGURATION

Admin Configuration

Addition of new Monitored Area

Dashboard > Admin Configuration > Add new Monitored Area

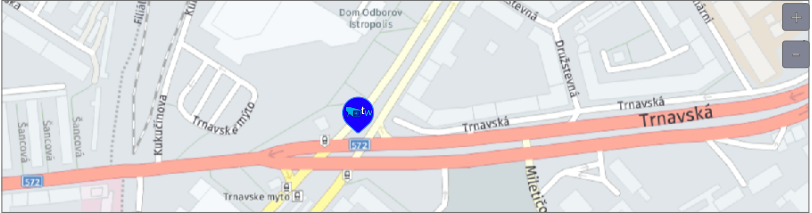
Add new Monitored Area

Device

Monitored Area Name

Device

Coordinates



MAIN NAVIGATION

Dashboard

Monitored Areas

CONFIGURATION

Admin Configuration

Admin Configuration

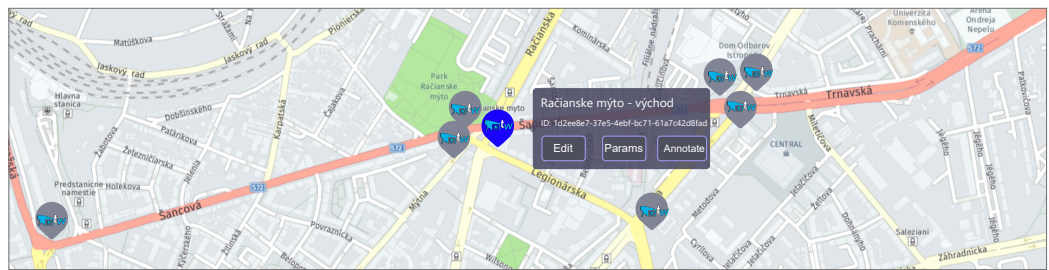
edit, create, set up Monitored Areas

Dashboard > Admin Configuration

Table of passed vehicles **Map of passed vehicles**

Add new area

Map of passed vehicles



MAIN NAVIGATION

Dashboard

Monitored Areas

CONFIGURATION

Admin Configuration

Edit Monitored Area

edit basic info about Monitored Area

Dashboard > Admin Configuration > Edit Monitored Area

Edit Monitored Area

Device

Monitored Area Name

Device

Coordinates

[Delete monitored Area](#)

Notification

Do you want to Set parameter or just Save device settings?

MAIN NAVIGATION

Dashboard

Monitored Areas

CONFIGURATION

Admin Configuration

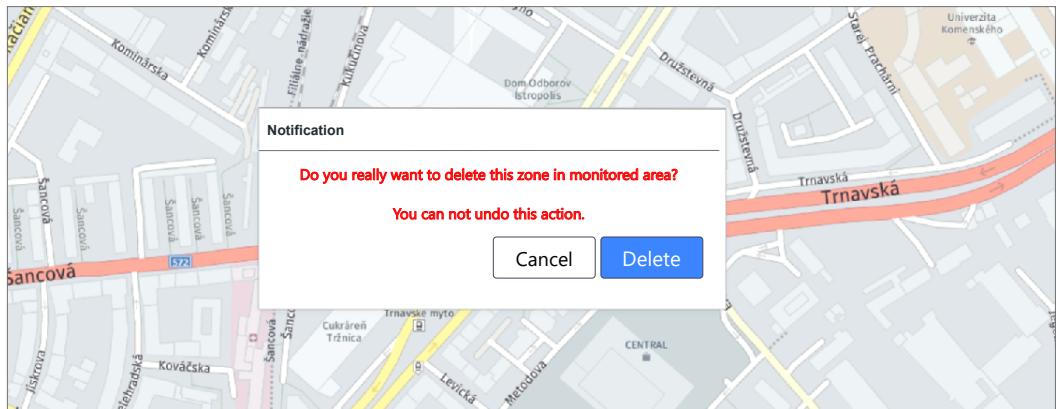
Edit existing area lorem ipsum dolor amet

Dashboard > Admin Configuration > Annotate Monitored Area > Edit existing zone

Trnavske myto - sever

Zone name

zone n 3



Erase

Show map

Show screenshot

Delete monitored Area

Cancel

Save

MAIN NAVIGATION

Dashboard

Monitored Areas

CONFIGURATION

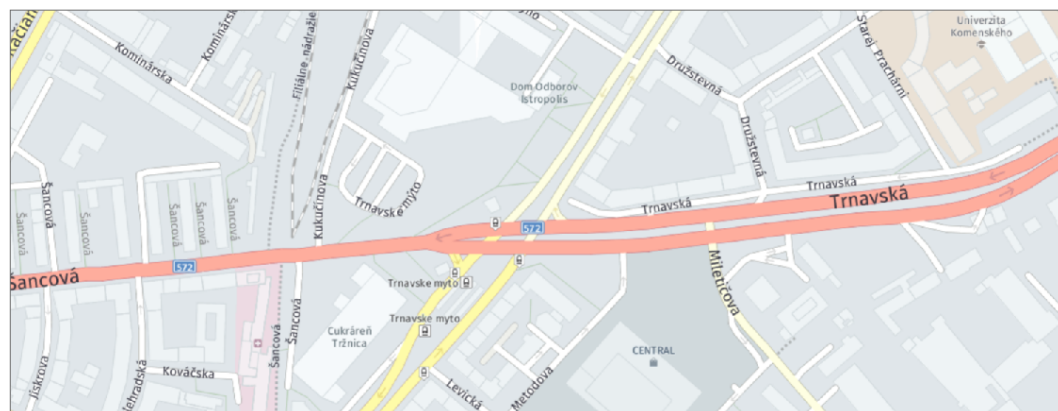
Admin Configuration

Addition of zone lorem ipsum dolor amet

Dashboard > Admin Configuration > Annotate Monitored Area > Add new zone

Trnavske mýto - sever

Zone name



Erase

Show map

Show screenshot

Cancel

Save

MAIN NAVIGATION

Dashboard

Monitored Areas

CONFIGURATION

Admin Configuration

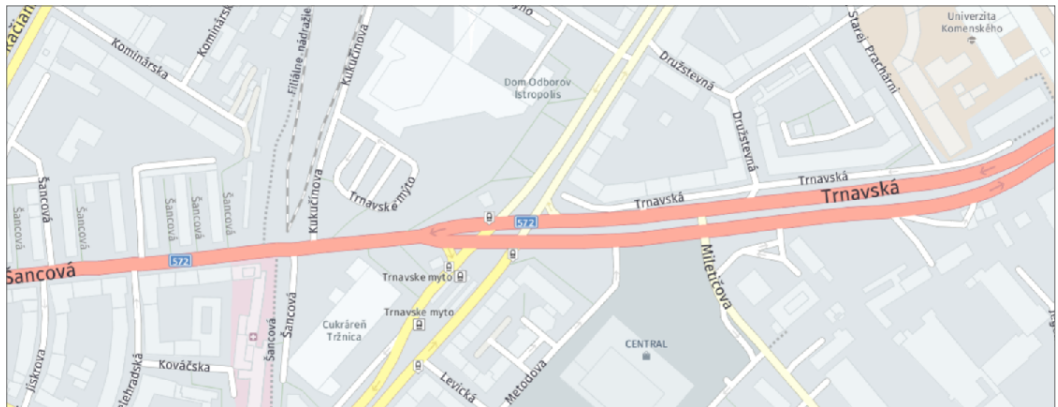
Edit existing area lorem ipsum dolor amet

Dashboard > Admin Configuration > Annotate Monitored Area > Edit existing zone

Trnavske myto - sever

Zone name

zone n 3



Erase

Show map

Show screenshot

Delete monitored Area

Cancel

Save

MAIN NAVIGATION

Dashboard

Monitored Areas

CONFIGURATION

Admin Configuration

Addition of new Monitored Area

Dashboard > Admin Configuration > Add new Monitored Area

Add new Monitored Area

Device

Monitored Area Name

Device

Coordinates

Notification

Do you want to Set parameter or just Save device settings?

MAIN NAVIGATION

Dashboard

Monitored Areas

CONFIGURATION

Admin Configuration

Edit Monitored Area

edit basic info about Monitored Area

Dashboard > Admin Configuration > Edit Monitored Area

Edit Monitored Area

Device

Monitored Area Name

Device

Coordinates

[Delete monitored Area](#)

Notification

Do you really want to delete this monitored area?
By deleting this monitored area you also delete
params for this area.
You can not undo this action.

MAIN NAVIGATION

Dashboard

Monitored Areas

CONFIGURATION

Admin Configuration

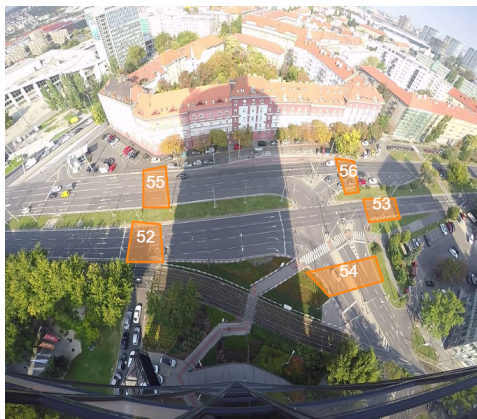
Addition of new zone lorem ipsum dolor amet

Dashboard > Admin Configuration > Annotate Monitored Area > Add new zone

Trnavske mýto - sever

Zone name

New screenshot



Erase

Show map

Show screenshot

Cancel

Save

MAIN NAVIGATION

Dashboard

Monitored Areas

CONFIGURATION

Admin Configuration

Edit existing area lorem ipsum dolor amet

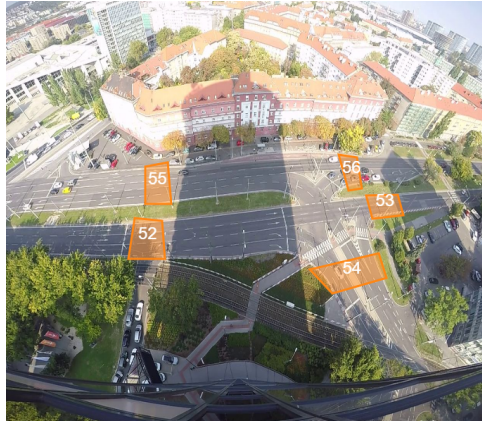
Dashboard > Admin Configuration > Annotate Monitored Area > Edit existing zone

Trnavske mýto - sever

Zone name

zone n 3

New screenshot



Erase

Show map

Show screenshot

Delete monitored Area

Cancel

Save

MAIN NAVIGATION

Dashboard

Monitored Areas

CONFIGURATION

Admin Configuration

Edit existing area lorem ipsum dolor amet

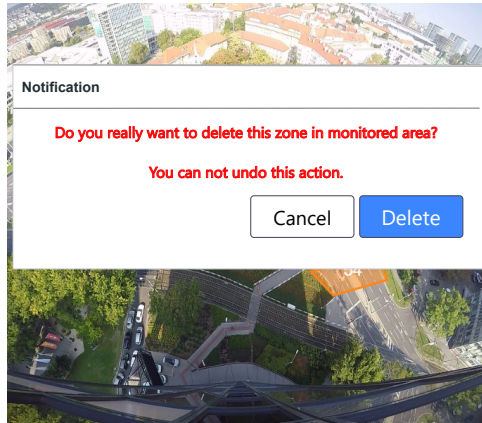
Dashboard > Admin Configuration > Annotate Monitored Area > Edit existing zone

Trnavske mýto - sever

Zone name

zone n 3

New screenshot



Erase

Show map

Show screenshot

Delete monitored Area

Cancel

Save

MAIN NAVIGATION

Dashboard

Monitored Areas

CONFIGURATION

Admin Configuration

Set parameters of Monitored Area

[create new monitored area](#)

[Dashboard](#) > [Admin Configuration](#) > [Set params of Monitored Area](#)

Set parameters of Monitored Area

Parameters

Background Subtraction History

Detector Min Contour

Width

Height

Counter Path Size

Counter Max Distance

Preview on Livestream

Cancel

Update

MAIN NAVIGATION

Dashboard

Monitored Areas

CONFIGURATION

Admin Configuration

Edit params of Monitored Area

edit basic info about Monitored Area Dashboard > Admin Configuration > Edit params of Monitored Area

Edit Monitored Area

Parameters

Background Subtraction History

Detector Min Contour

Width	Height
<input type="text" value="5"/>	<input type="text" value="5"/>

Counter Path Size

Counter Max Distance

[Preview on Livestream](#) [Cancel](#) [Update](#)