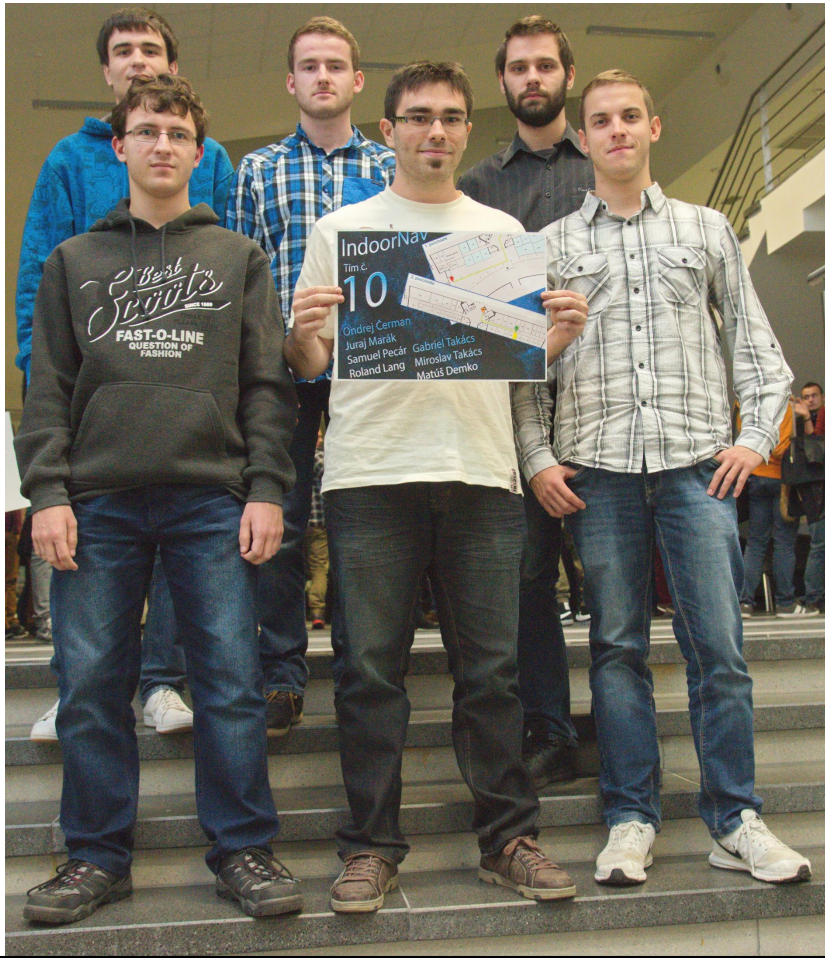




IndoorNav



STU
FIIT

SLOVENSKÁ TECHNICKÁ
UNIVERZITA V BRATISLAVE
FAKULTA INFORMATIKY
A INFORMAČNÝCH TECHNOLOGIÍ

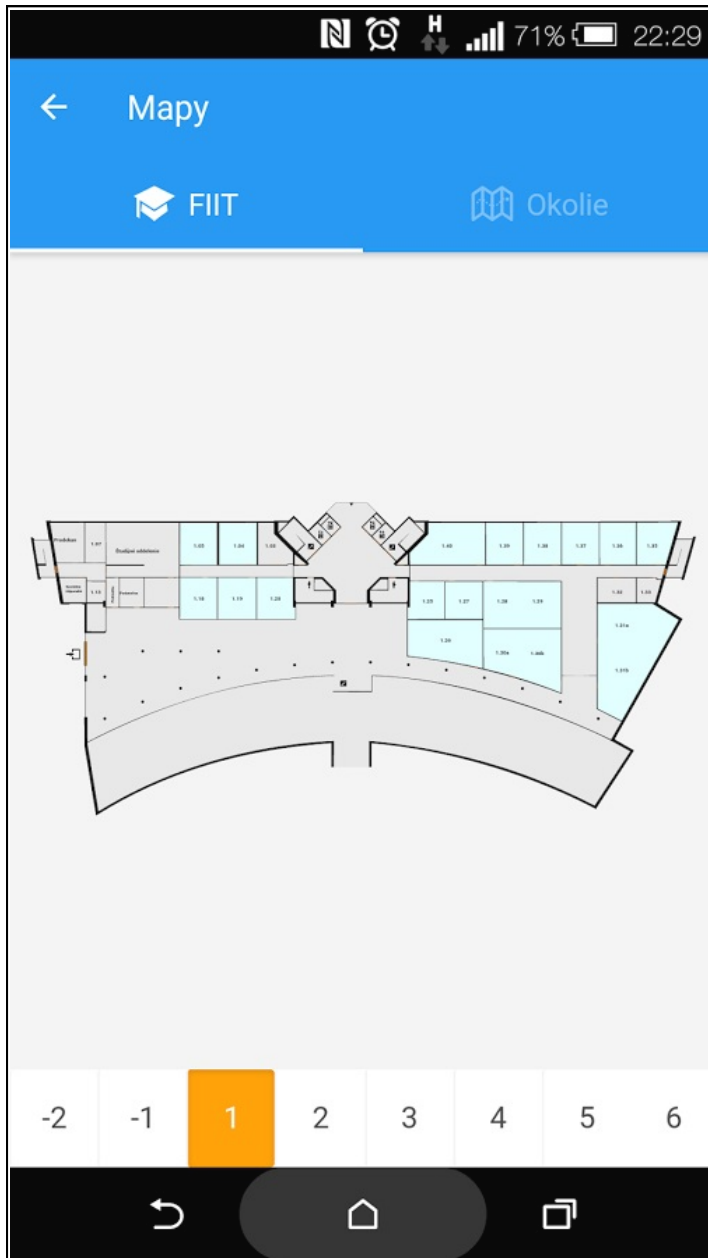


STU



Stratili
ste sa?





Virtual FIIT

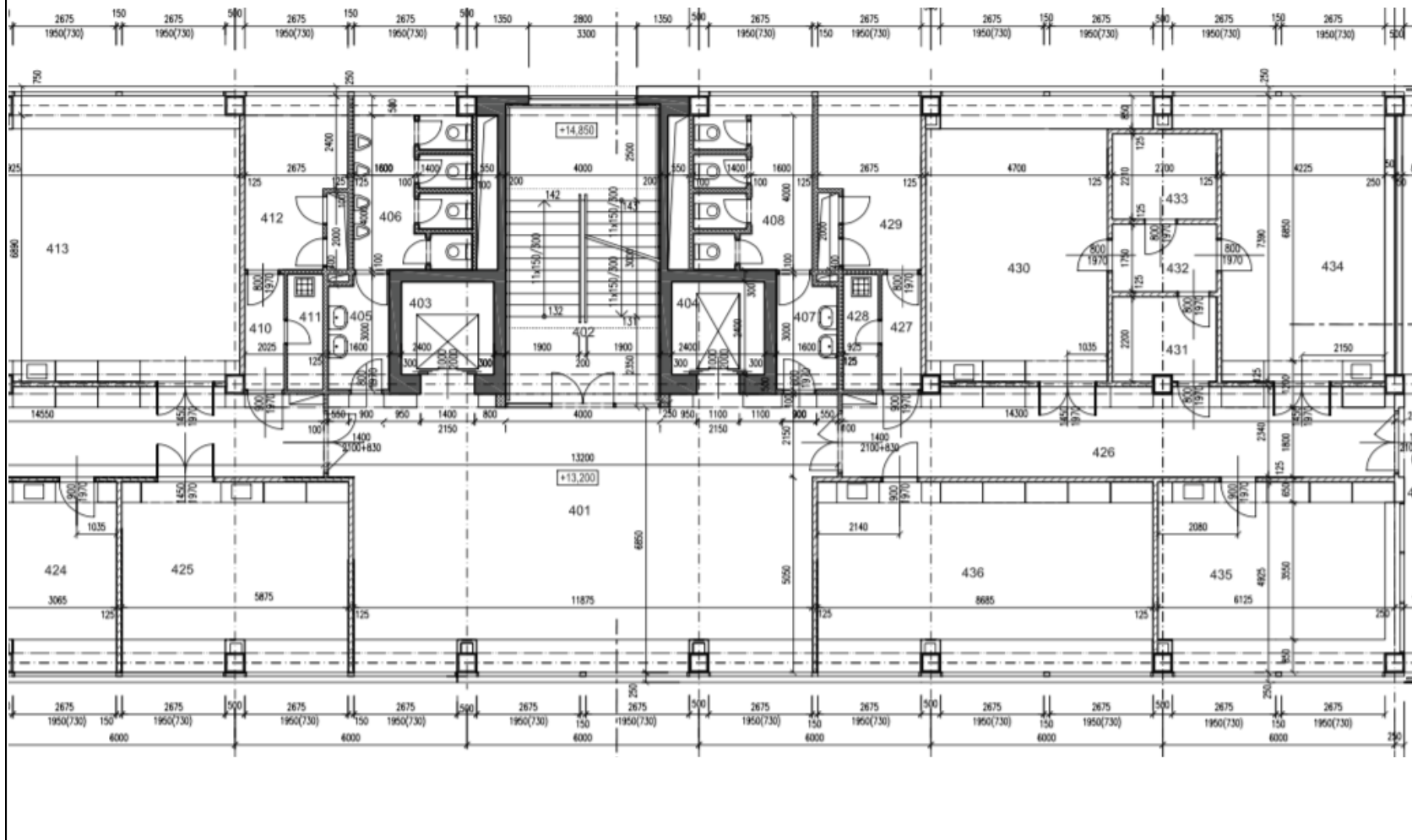


Problémy

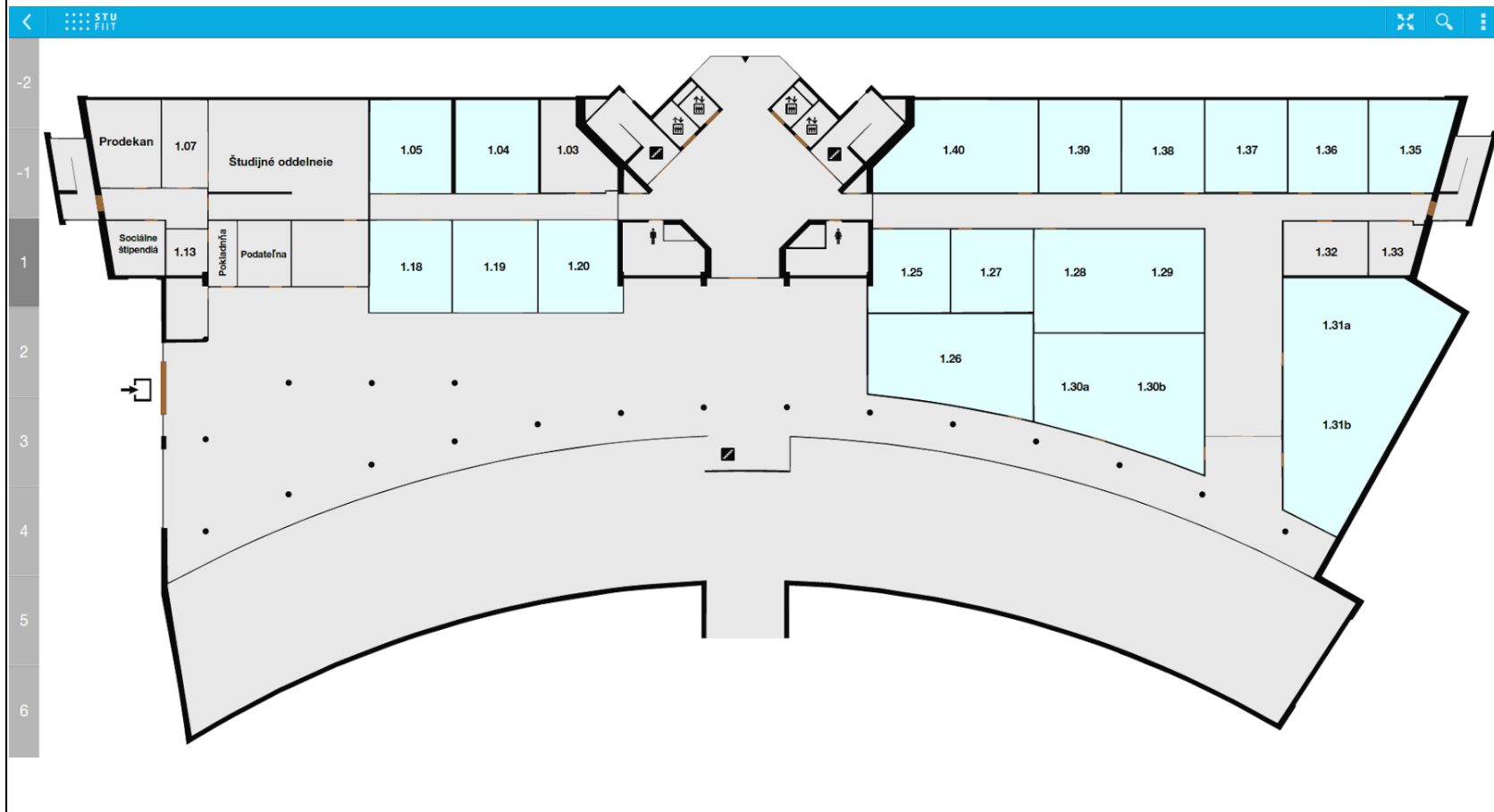
- vytvorenie mapy je náročné
- efektívne rozmiestniť majáčky
- lokalizovať človeka v budove



Čo máme k dispozícii?



Čo potrebujeme?

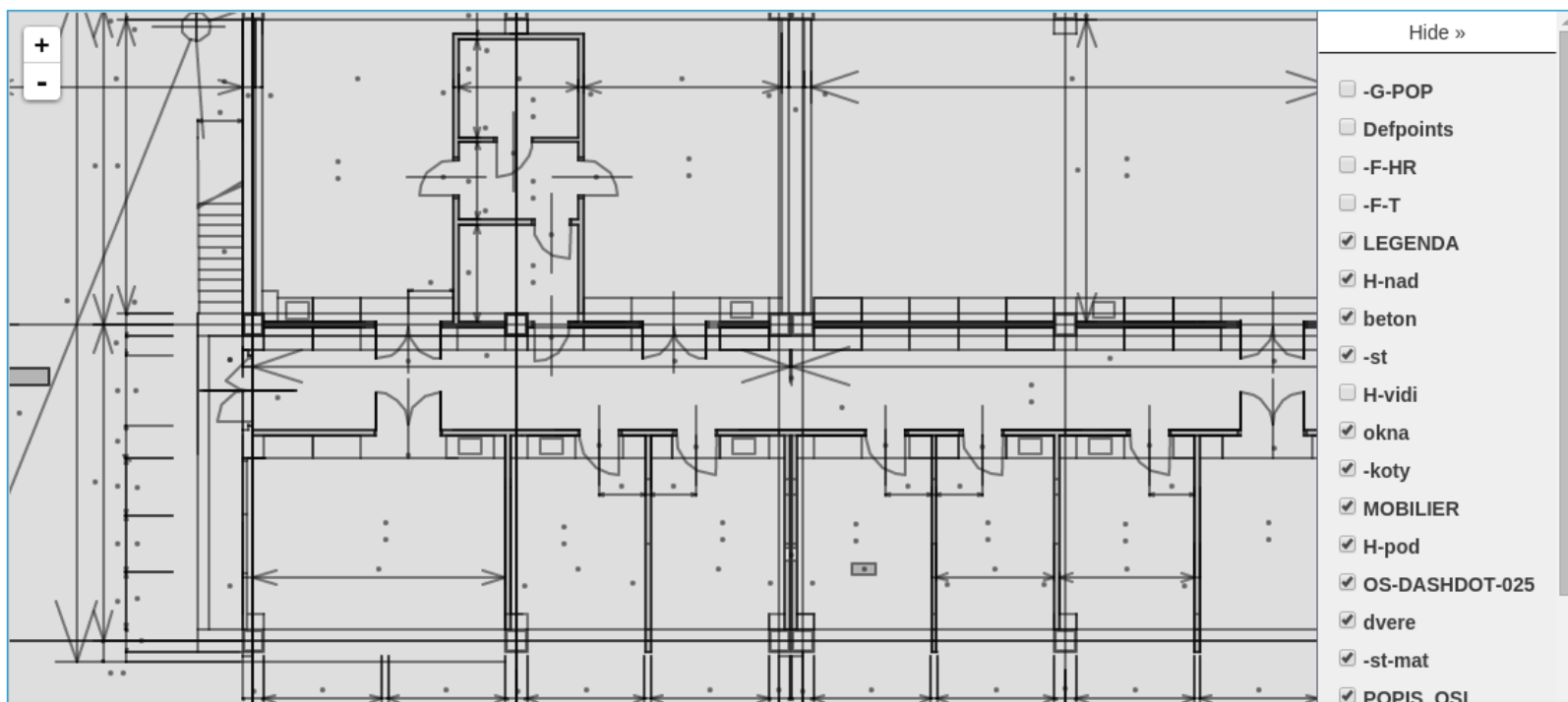


Náš prototyp

IndoorNav Home Map Propagation About

Upload file > **Select layers** > Edit map > Export

Select layers for final svg file



The screenshot displays the 'Select layers' interface of the IndoorNav application. On the left, a detailed architectural floor plan is shown, featuring a central staircase and various rooms. On the right, a layer selection panel is visible, titled 'Hide »'. The panel contains a list of layers with checkboxes indicating their selection status:

- G-POP
- Defpoints
- F-HR
- F-T
- LEGENDA
- H-nad
- beton
- st
- H-vidi
- okna
- koty
- MOBILIER
- H-pod
- OS-DASHDOT-025
- dvere
- st-mat
- POPIS OSI

Náš prototyp

IndoorNav Home Map Propagation About

Upload corridor map

map_9_1.svg
(supported file types: SVG)

Distance of left and right wall m

Generate placement

Grid density Beacon radius Minimum Cover

View beacon map

Ďakujeme za pozornost